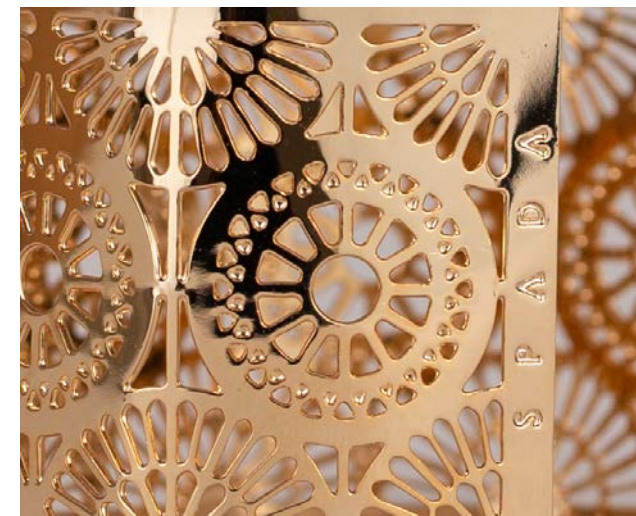




S P A D A

*"The mother art is architecture.  
Without an architecture of our own,  
we have no soul of our civilization."*

*Frank Lloyd Wright*



**WEAR ARCHITECTURE.**





## MUSEUM OF APPLIED ARTS

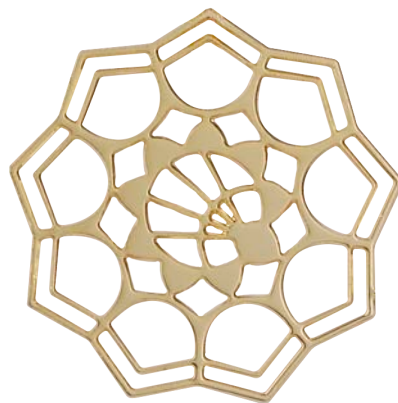
HUNGARY, 1872

Ödön Lechner  
Art Nouveau

Has 2 permanent collections:  
Arts&Crafts and Islamic art.  
The museum's stunning entral hall of white  
marble was modelled on the Alhambra in Spain.  
The dome is decorated with Zsolnay  
ceramic tiles.







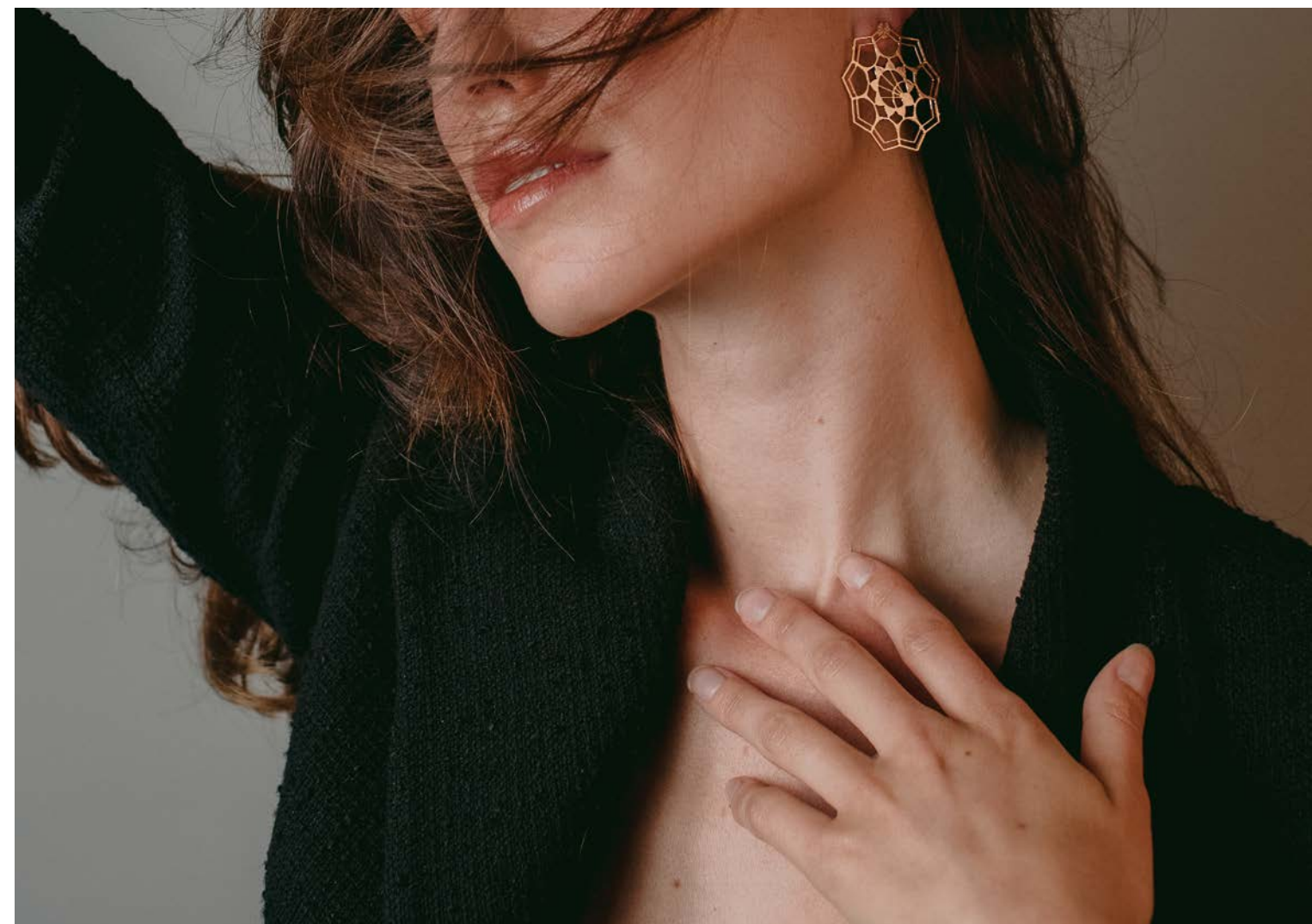
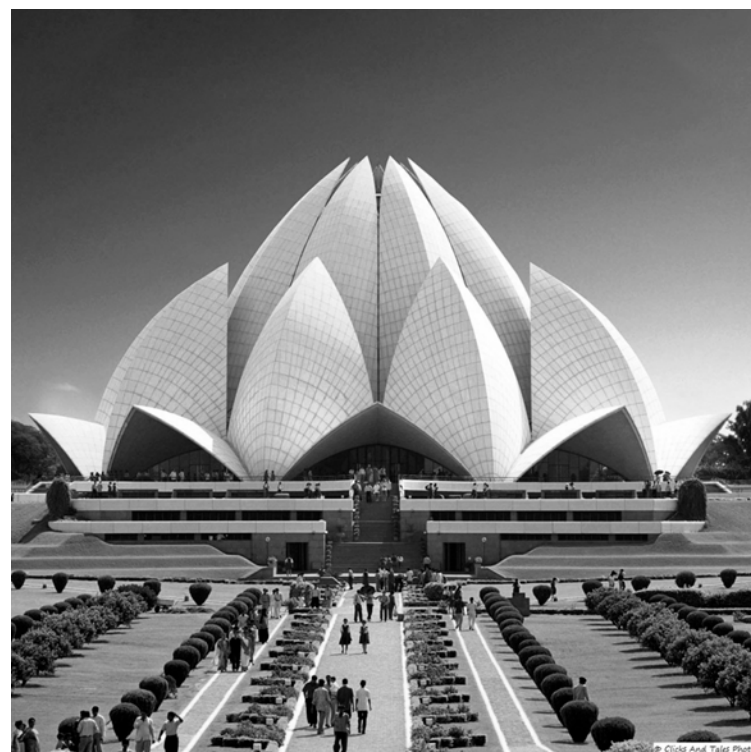
## LOTUS TEMPLE

INDIA, 1986

Fariborz Sahba

Expressionism

The Lotus Temple is a Bahá'í House of Worship, open to all religions. Measuring 34m at its highest, it is composed of 27 free-standing marble clad 'petals'.





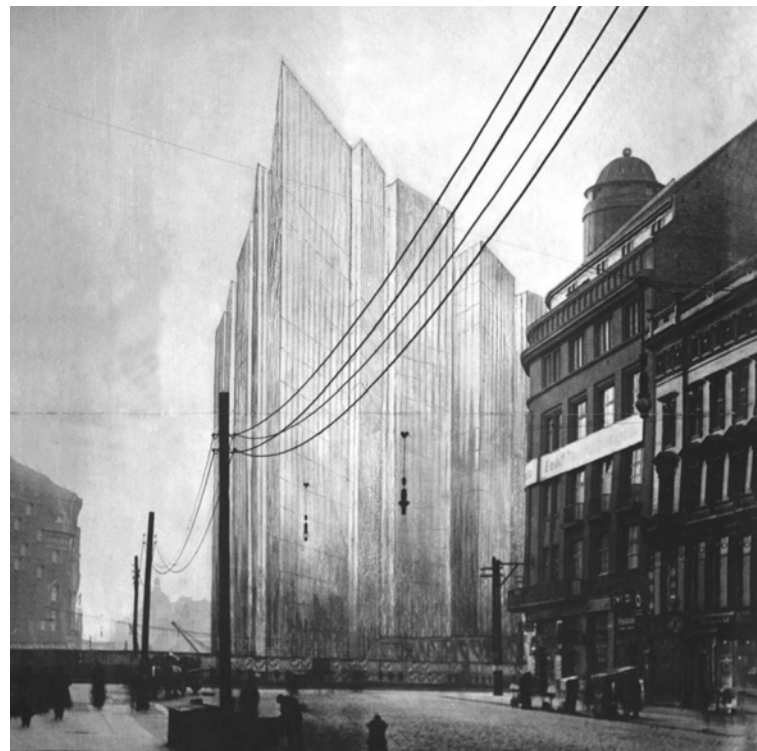


## **FRIEDRICHSTRASSE SKYSCRAPER**

GERMANY, 1921  
Ludwig Mies van der Rohe  
Modernism

The design for a crystal tower was  
unprecedented in 1921.

It was based on the untried idea that a  
supporting steel skeleton would be able to  
free the exterior walls from their load bearing  
function, allowing a building to have a  
surface more translucent than solid.







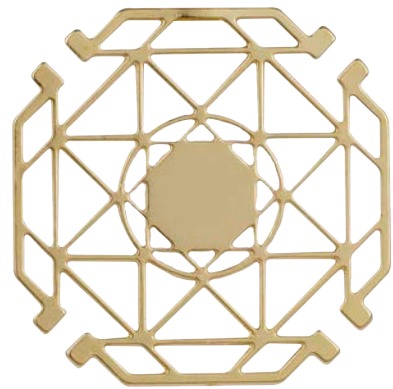
## **PALAZZETTO DELLO SPORT**

ITALY, 1957  
P. Nervi and A. Vitellozzi  
Modernism

Called by Zevi "a compressed Pantheon" it was built for the 1960 Olympics in Rome. The 78m diameter dome is made of 1620 precast concrete modules that create a pattern following the internal forces of the shell.







## THE DOME OF THE ROCK

PALESTINE, 691  
Umayyad Caliph Abd Al-Malik  
Umayyad/Ottoman

Jerusalem's UNESCO World Heritage Site.  
The originally wooden dome is replaced by  
aluminum-bronze plates covered with gold leaf.  
The Foundation Stone on which the temple is  
built has great religious significance for Jewish  
as the place where God created the world and  
the sacrifice of Abraham and for Muslims as  
the point from where Muhammad ascended to  
heaven.







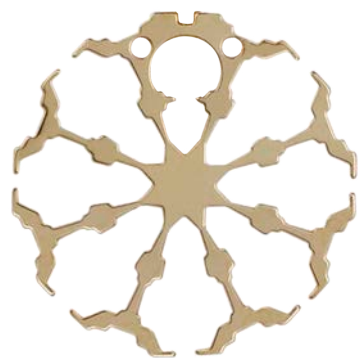
## CASTLE OF GOOD HOPE

SOUTH AFRICA, 1679  
P. Cool and P. Dombaer (engineer)  
Bastion Fort

Located in Cape Town,  
The Castle is a stark remnant of the  
dominance of European Colonial powers.  
It is the eldest existing colonial building  
in South Africa and the best preserved  
example of a Dutch East India Company  
fort worldwide.







## **RADCLIFFE CAMERA**

ENGLAND, 1749

J. Gibbs

Neo-Classical

The Rad Cam, also known as the “heart of Oxford” for its central location, was built to house the scientific books of James Radcliffe, the most successful physician in England.

This cathedral of knowledge was the first circular library in England. It now functions as a reading room of the nearby Bodleian Library. An underground bookstore for 600,000 books lies beneath the Square.







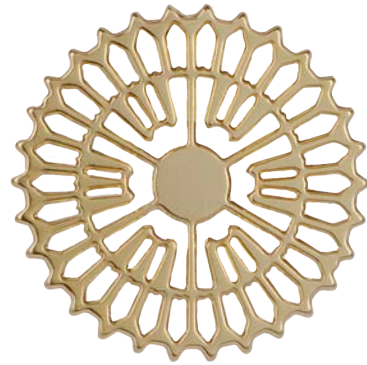
## CATEDRAL NOSSA SENHORA APARECIDA

BRASIL, 1970  
O. Niemeyer  
Modernism

With a diameter of 70m, the only visible structure  
is the cathedral being sixteen concrete columns  
with a very particular shape.  
Reaching up towards the sky to represent two  
hands,  
the columns have parabolic sections.







## **CORONA DE ESPINAS**

SPAIN, 1967

F. Higuera and A. Miró

Constructivism, Rationalism and Organic Architecture

Literally “the Crown of Thorns” due to its imposing round shape topped with jutting spiked points.  
A modern cathedral dedicated to the conservation of Spanish historical heritage, resolved with modern technology, but linked to a traditional sense of discipline in the same way that Gothic architects used repetitive systems.







## CAPELAS IMPERFEITAS

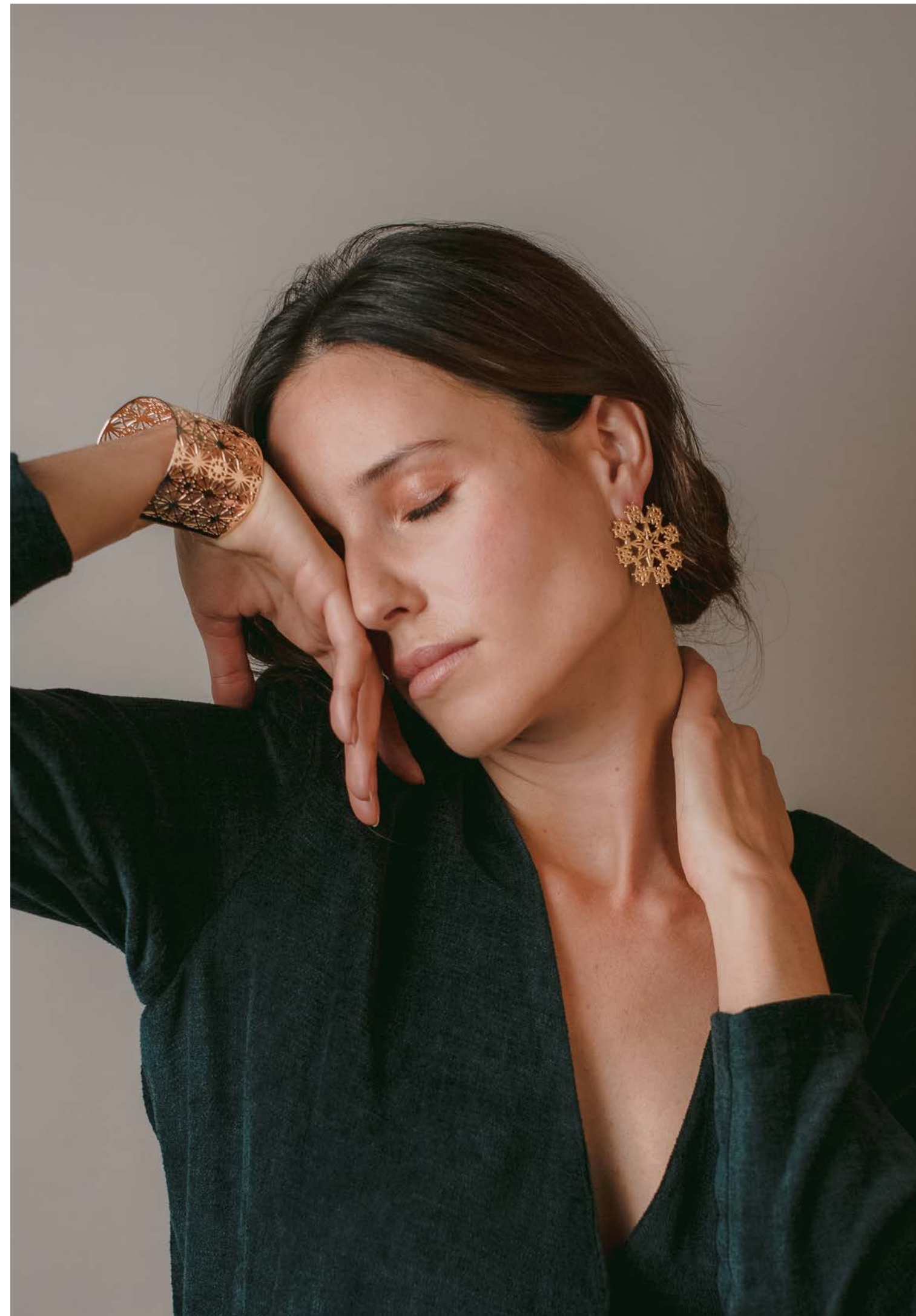
PORTUGAL, 1434

Huguet

Manueline (Portuguese late Gothic)

Aligned with the main chamber of the Monasterio da Batalha, an octagonal shape structure with 7 small radial chapels and one entrance separated by small triangular elements that were meant to be the buttress for the dome.

But this structure was never built and remained open air. That is why they are known as Capelas Imperfeitas or "Unfinished Chapels"







## BAHA'Í HOUSE OF WORSHIP

USA, 1953  
L. Bourgeois and G. Fuller  
Eclecticism

The eldest of the 8 surviving Bahá'í temples in the world.

It has a radial composition with 9 segments, since nine is the last number in the decimal system, Bahá'ís believe it symbolizes perfection, completion, unity.

It is considered as one of the "Seven Wonders of Illinois" and included in the list of National Historic Places of USA.







## WINCHESTER CATHEDRAL

UK, 1079-1093  
Norman Gothic

It represents the ribs of its central nave (the largest in Europe of its style). A structural network for the roof of the building made up of segments of arches ("nerves") resting on columns to open large openings in the walls.

Characteristic of the Gothic style where it prevails to give height and gain luminosity. They will evolve in more complex networks (fan vaults, characteristics of the English Gothic style, which will force the transformation of the supports).



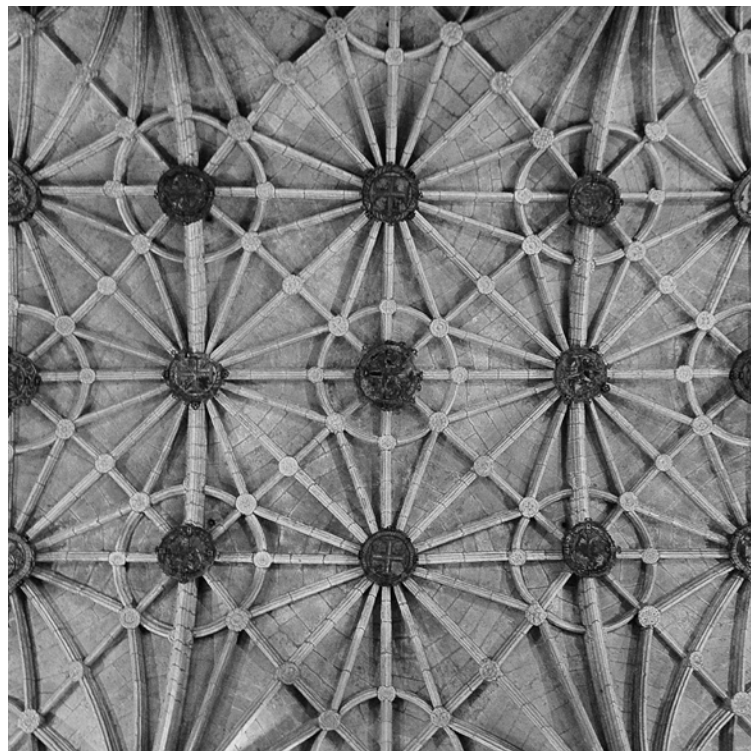




## MONASTERIO DE BELEM

Portugal, 1079-1093  
Late Gothic Manueline style  
Joao de Castilho

UNESCO World Heritage Site.  
The supreme architectural representatives of a period in which the Portuguese nation played a leading role on maritime discoveries with Belem as their main port. Its spectacular network vaulting that has no arches and is supported on finely carved columns. In the vast transept, secured by bosses, the vaulting seems to be suspended from the sky, for there is no column supporting it at all!







## ST MARY ALDERMARY

UK, 1681

Gothic style

Sir Christopher Wren (last rebuilt)

The Anglican Church of St Mary Elder Mary, as its name indicates, is the oldest of the City churches dedicated to the Virgin Mary (900years old) and only surviving late c17th Gothic church in the City of London.

Of medieval origin, it was badly damaged in the Great Fire of London in 1666, it was rebuilt by Wren's master craftsmen. It is especially notable for its unique plaster vaulting and its magnificent wooden sword rest.







Each design represents an iconic architectural  
landmark around the world.  
In this way, we bring architecture closer to everyday  
life through jewelry with a high cultural value.

Slow fashion  
Made in Spain with quality materials.









spadacollection.com  
@spada.studio  
+34 687 24 55 58  
maria@spadacollection.com