

INTRIGUING DETAILS

THE VIEW, THE SEA AND THE SUN AS INSPIRATION

*Success occurs when opportunity
meets preparation*

A CAREFULLY SELECTED PLOT IN A UNIQUE LOCATION, AN EXTREMELY TALENTED ARCHITECTURAL TEAM AND A PROFESSIONAL DEVELOPMENT GROUP ARE THE KEY INGREDIENTS TO REALISE THE VIEW MARBELLA.

ALLOWING THE CREATIVITY TO FLOW, AND WITH ALMOST NO LIMITS, TEODORO CABRILLA WAS ABLE TO EXTRACT EVERY OUNCE OF MAGNIFICENCE OF THE PROJECT. THE RESULT IS A UNIQUE AND ICONIC DEVELOPMENT AND A FUTURE LANDMARK IN MARBELLA.

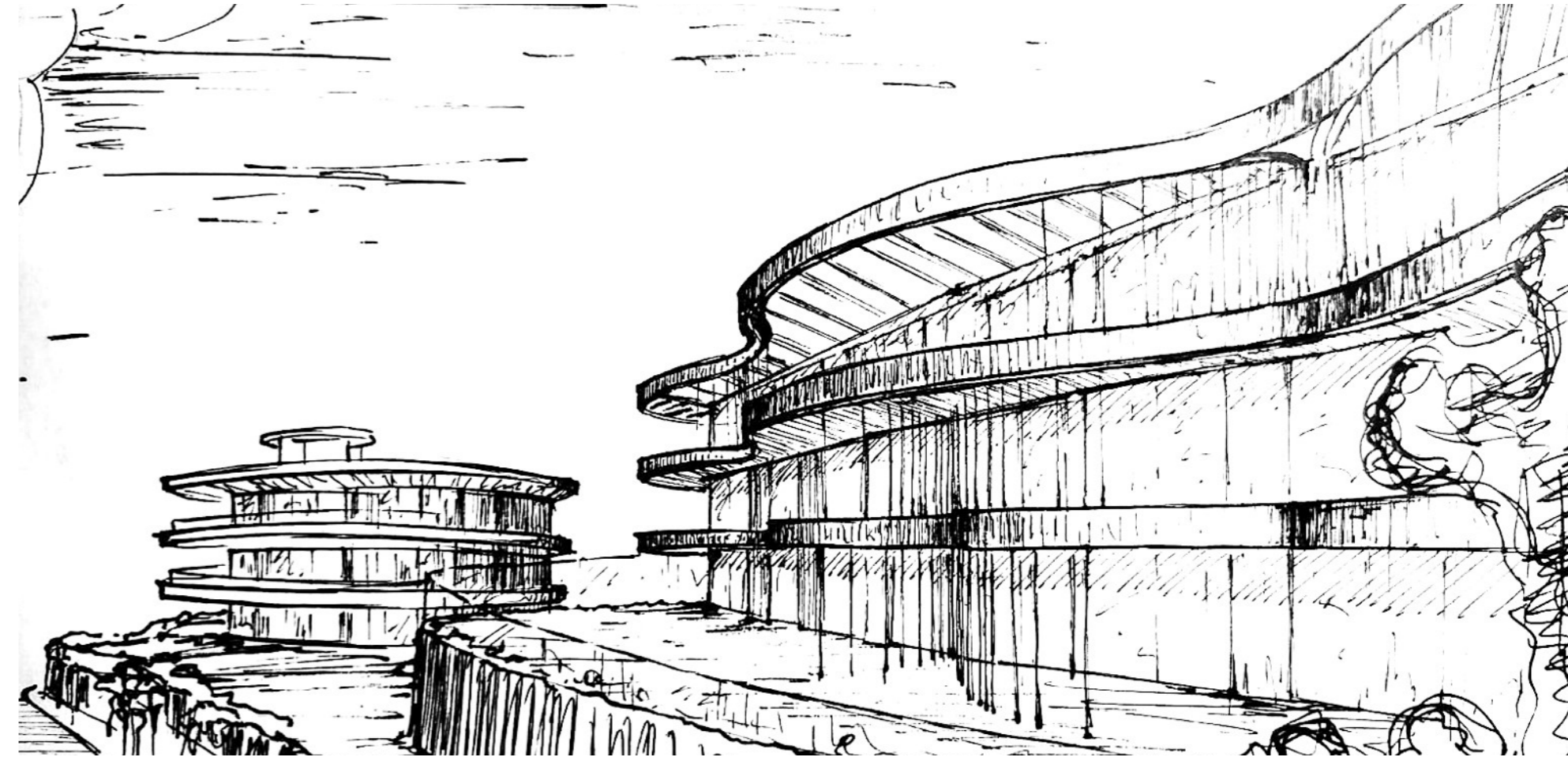


THE DESIGN

Teodoro Cabrilla, the architect

THE UNIQUE PLOT, INCORPORATED IN ITS SURROUNDINGS AND SERVING A NATURAL VIEWPOINT AT THE TOP OF THE MOUNTAINS, WAS THE FOUNDATION OF THE CONCEPT, AND THE IDEA TO CARRY THIS ELEMENT THROUGH TO EACH APARTMENT. A PROJECT ORIENTATED TOWARDS THE SOUTH, ENFORCING THE SPECTACULAR VIEWS AND THE NATURAL LIGHT.

IN EVERY CORNER THE PROJECT SEEKS THE HARMONY BETWEEN THE HUMAN AND THE SURROUNDING NATURE. THE ARCHITECTURAL DETAILS AND MATERIALS CHOSEN REACH A PERFECT HARMONY WITH THE ENVIRONMENT, AND BRINGING THE ORGANIC PHILOSOPHY ALIVE, ALLOWING IT TO FLOURISH.



Teodoro Cabrilla, Architect

“The project seeks harmony between the human habitat and the natural environment, architecture dialogues with nature”